



# Palfrey Infant School Newsletter

Autumn Term 1 – 17.10.2025

## A message from Mrs Walsh:

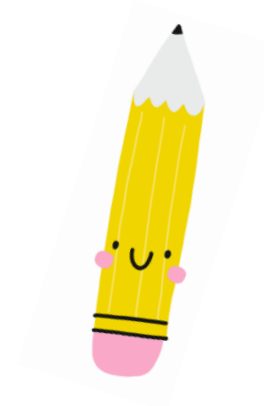
Last week, we received a visit from the Mayor who presented us with a gold standard certificate for our A Stars walking programme. Well done to all!

This weekend, members of the Forge Brook Trust are taking part in a park run. Goodluck to all those taking part.

On Monday 20th October, in support of the Poppy Appeal we will be selling poppy merchandise. Merchandise will be available until Friday 10th November. More information is provided in this newsletter.



Headteacher



**REMINDER**

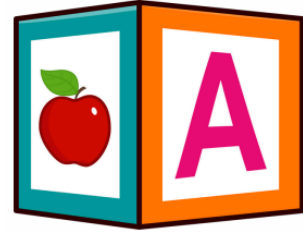
**Parents Evening is  
next week!**

**20th-22nd October**



[support@palfreyinfant.co.uk](mailto:support@palfreyinfant.co.uk)

# Phonics workshop

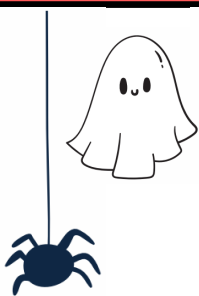


On Wednesday 22nd October  
there will be a Phonics workshop  
for Reception from 2-3pm!

## FLU VACCINATION

Please can all Reception, Year 1 & Year 2 Parents see  
their email regarding Flu Vaccinations.

Please complete the form.



# HALLOWEEN



For the last day of term, on Friday 24th  
October it will be a non-uniform day and  
there will be a special Halloween lunch.

Please see the menu on next page.



# Poppy Appeal

MONDAY 20<sup>TH</sup> OCTOBER-  
FRIDAY 7<sup>TH</sup> NOVEMBER



**POPPIES &  
STICKERS-  
DONATION**

**AVAILABLE ON THE MAIN SCHOOL PLAYGROUND  
AT HOMETIME & ANYTIME AT THE SCHOOL OFFICE**



**BANDS £1**



**SNAP BANDS £1.50**



**REFLECTORS  
50P**



**In support of the Poppy Appeal, from Monday 20th Oc-  
tober to Friday 7th November we will be selling poppy  
merchandise. All purchases/donations will go to the  
Poppy Appeal.**





**CELEBRATE WITH US**

**HALLOWEEN**  
Friday 24th October



**Main Dish**

Frightful Fish Fingers  
Cheesy Skull Pizza

**Sides**

Frankenstein Fries  
Scary Sweetcorn  
Eyeball Baked Beans

**Dessert**

Creepy Crawly Cupcakes



**FOODSMART**  
FOR BODY & MIND

A healthy food meal is important for children and young people to ensure they are getting the nutrients they need for a healthy life.



# PE DAYS

**Tuesday:** Reception

**Wednesday:** Year 2 (class 7 & class 9)

**Thursday:** Year 1 (class 4 & class 6)

**Friday:** Y2 class 8 & Y1 class 5



Please can students come to school in their PE kits

*After School Clubs—Please come in PE Kits on their selected day*

## Free School Meals 2025



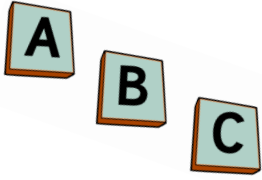
We would like all parents to sign up for the Free School Meals within school. Your child may be entitled to the pupil premium funding. This is a grant given by the government to schools in England to decrease the attainment gap for the most disadvantaged children, whether by income or by family upheaval.

Please access the link and complete the online form here:

<https://apply.cloudforedu.org.uk/ofsm/entrust>



# PHONICS



**For Year 1 parents**

Please scan the below QR code to learn more about the Phonics screening assessment that will take place next year!



**IMPORTANT!**



# SCHOOL TIMES from SEPTEMBER 2025

## Nursery School Times

### Nursery

Kingfisher, Robin & Owl

### Times

8:45am-11:45am

## Reception School Times

### Classes 1, 2 & 3

	Start time	C2 & 3 End time	C1 End time
Monday-Friday	8:45am	3:15pm Main Gate	3:15pm Nursery gate

## Year 1 School Times

### Classes 4, 5 & 6

Monday-Friday

### Start time

8:45am

### End time

3:15pm

## Year 2 School Times

### Classes 7, 8 & 9

Monday-Friday

### Start time

8:45am

### End time

3:15pm

Please be mindful we have a 10 minute period for safe entry to school, there is no need to push and overcrowd the gate, this causes children to be frightened and is unnecessary. After the initial rush there is plenty of time to enter calmly. Once children have gone through the gate, please clear the gateway for other children to enter, do not linger.

If you wish to get a message to the class teacher please speak with the school adults who are on the gate: Mrs Walsh and Mrs Adams.

Whitehall Road entrance will be closed at **8:55am**. Try not to be late as this creates issues.

Any late pupils need to enter via the Bescot Street entrance (opposite Palfrey Garage).



# Dates for your diary

## Autumn Term 2025

### October

**20th-22nd October**– Parents evening.

**Wednesday 22nd October**– Reception phonics workshop 2-3pm

**Friday 24th October**– Non uniform day & Special Halloween lunch

**Monday 27th— Friday 31st October**– Half Term holiday (school closed)

### November

**Monday 3rd November**– Inset day (school closed).

**Tuesday 4th November**– School open normal times.

**Monday 10th November**—Odd Socks Day—Anti Bullying Week

**Tuesday 11th November**— Remembrance day

**Friday 14th November**—Children in Need—Non School Uniform

### December

**Monday 8th December**– Sleep workshop at 1pm with the school nurse

**Thursday 11th December**– Christmas Jumper Day and special lunch.

**Tuesday 16th & Wednesday 17th December**– Reception Christmas play

**Wednesday 17th December**– Y2 Christmas concert

**Thursday 18th December**– Class Christmas parties

**Friday 19th December**– Last day of term



# Dates for your diary



## Spring Term 2026

### January

**Monday 5th January** – Inset day

**Tuesday 6th January**- School reopens (start of new term)

### February

**Monday 16th– Friday 20th February**– Half term holiday (school closed)

### March

**Tuesday 24th March**– Reception parent afternoon workshop

**Friday 27th March**– Last day of term

## Summer Term 2026

### April

**Monday 13th April**– School reopens (start of new term)

### May

**Monday 25th– Friday 29th May**– Half term holiday (school closed)

### July

**Wednesday 15th July**– Sports day

**Monday 20th July**– Inset day (school closed)



# COURSES

We are offering a range of courses for parents. The courses will be led by school nurses and hosted at school (please go to the main school office). All the courses will last approximately an hour. Please see the table for all available courses.

Course	Date	Start Time
Getting to know your school nurse	9th October 2025	9:00am
Sleep workshop	8th December 2025	1pm
Behaviour workshop	12th January 2026	1pm
School Readiness	17th March 2026	9am





The Autumn timetable for Walsall Family Hub's sessions and events is now available. Please use the link or QR code to find out about sessions/events near you for families with children age 0-5 years.

[walsallfamilyhubs.co.uk/find-activity](https://walsallfamilyhubs.co.uk/find-activity)

