



Palfrey Infant School Newsletter

Spring Term 1– 13.03.2026

A message from Mrs Walsh:

Thank you to all of our parents and children who took part in the Big Litter Pick-up!

As Ramadan comes to a close we hope all had a peaceful Ramadan and will have a Happy Eid.

School will be closed for Eid. Parents will be notified via text on which day the school will be closed.



Headteacher

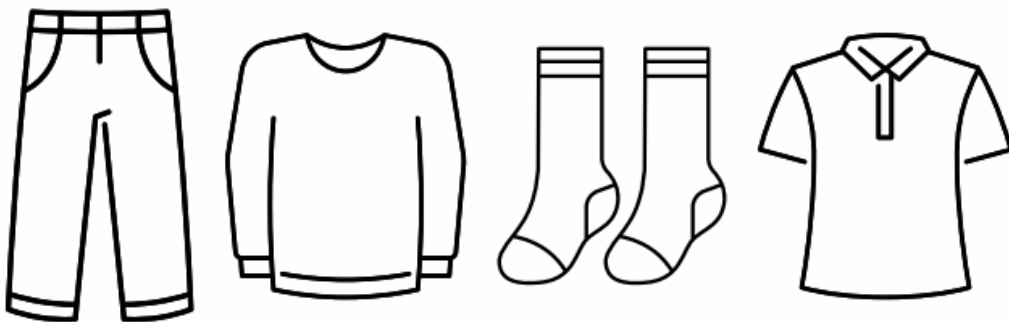


support@palfreyinfant.co.uk



To keep updated
about what is
going on in school
follow us on
facebook!

CLOTHES DONATIONS



We welcome any donations of spare clothes such as joggers, trousers, leggings, tops, jumpers and socks.
Please bring any donations to the school office.



World Book Day 2026

We enjoyed World Book Day dressed up as our favourite book characters. The children also enjoyed their special lunch on the day!



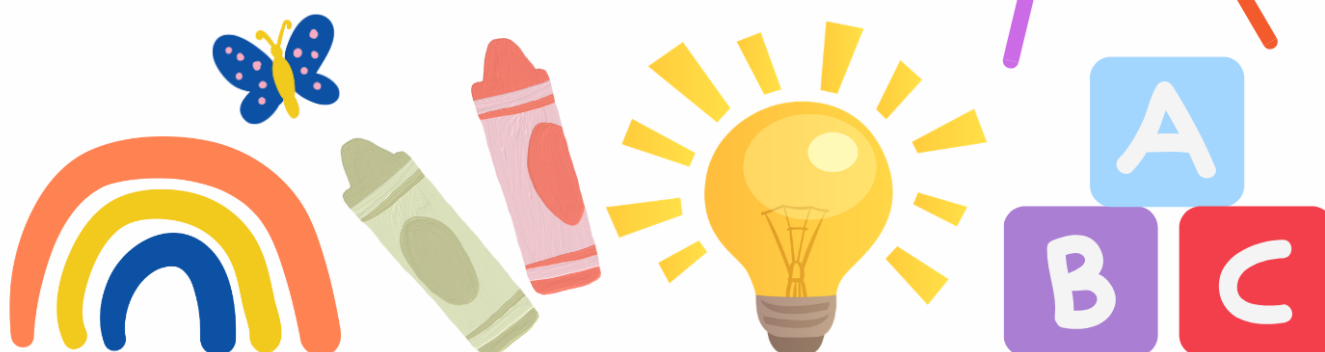


NURSERY

APPLICATIONS FOR SEPTEMBER 2026

If you wish to apply for a nursery place please apply on our website. Places are available for children from 2 years old.

1. Go to the Palfrey Infant school website
2. Select Key information →
→ admissions →
Nursery class admissions
3. Please complete an application form



PE DAYS

Tuesday: Year 1 & 2– Cricket Sessions

Wednesday: Reception



Please can pupils come to school in their PE Kits.

Free School Meals 2026



We would like all parents to sign up for the Free School Meals within school. Your child may be entitled to the pupil premium funding. This is a grant given by the government to schools in England to decrease the attainment gap for the most disadvantaged children, whether by income or by family upheaval.

Please access the link and complete the online form here:

<https://apply.cloudforedu.org.uk/ofsm/entrust>



COURSES

We are offering a range of courses for parents. The courses will be led by school nurses and hosted at school (please go to the main school office). All the courses will last approximately an hour. Please see the table for all available courses.

Course	Date	Start Time
School Readiness	17th March 2026	9am





ENERGY CAFÉ

You're in for a treat!



Every Monday at 10 am - 2 PM

Nash Dom Community Hub, Sun Street,
Walsall WS1 4AL



We offer:

- FREE warm and welcoming space to relax, chat, and enjoy a cuppa
- FREE help to reduce your energy bills
- FREE energy-saving tips
- FREE referrals for home visits to improve energy efficiency



Everyone is welcome – drop in and make the most of it!



SCHOOL TIMES from 2025-2026

Nursery School Times

Kingfishers, Robins and Owls	Start Time	End time
Owls	8:30am	11:30am
Penguins	12:30pm	3:30pm

Reception School Times

Classes 1, 2 & 3

	Start time	C2 & 3 End time	C1 End time
Monday-Friday	8:45am	3:15pm Main Gate	3:15pm Nursery gate

Year 1 School Times

Classes 4, 5 & 6	Start time	End time
Monday-Friday	8:45am	3:15pm

Year 2 School Times

Classes 7, 8 & 9	Start time	End time
Monday-Friday	8:45am	3:15pm




Please be mindful we have a 10 minute period for safe entry to school, there is no need to push and overcrowd the gate, this causes children to be frightened and is unnecessary. After the initial rush there is plenty of time to enter calmly. Once children have gone through the gate, please clear the gateway for other children to enter, do not linger.

If you wish to get a message to the class teacher please speak with the school adults who are on the gate: Mrs Walsh, Mrs Hennefer and Miss Glover.


Whitehall Road entrance will be closed at **8:55am**. Try not to be late as this creates issues.

Any late pupils need to enter via the Sun Street entrance (opposite the Nash Dom Centre).



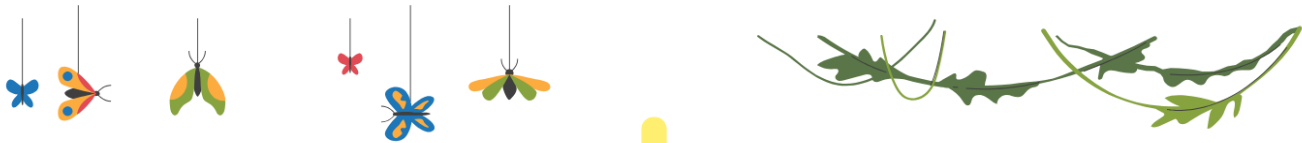


School Readiness workshop



On Tuesday 17th March at 9AM all nursery
parents are invited to a workshop with
the school nurses before children begin
Reception in September.





Nursery

Stay and Play

Following the workshop we will have a stay and play session with parents.
We will also have a stay and play session in the afternoon from 2PM- 3PM.



Reception

HEIGHT AND WEIGHT CHECKS

Please can Reception parents see their email regarding height and weight checks for Reception children on the 16th April 2026.



On the 25th and 26th March at 1PM, Reception will be going on Safety Walks. Please can parents complete the permission slips and return them to school without them children will not be able to go on the walks. Thank you.



Things to do

Free family fun is available at Family Hubs.

Insert call to action



Walsall Council



Walsall Family Hubs

Supporting families to live happier lives



Funded by UK Government



Best Start in Life Family Hubs offer a welcoming space where all families can access advice and support from a range of services for all families in Walsall.

The Hubs support families from pregnancy to childcare right through to starting school, get advice and support for your child's development.

They offer lots of FREE activities such as; stay & plays, antenatal, feeding, birth registration, baby massage, baby sensory, developmental checks, volunteering midwife appointments, baby clinics, dads groups, parenting and so much more...

More information about the Hubs, and what they offer, can be found on the Family Hubs website: <https://www.walsallfamilyhubs.co.uk/>
Email: Familyhubs@walsall.gov.uk and follow us on Facebook:

WalsallFamiliesintheknow



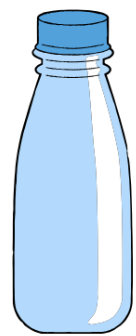
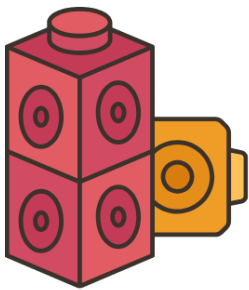
Big Litter Pick-Up

Thank you to all our parents and children who took part in the Litter Pick. We look forward to holding more sessions in the future!



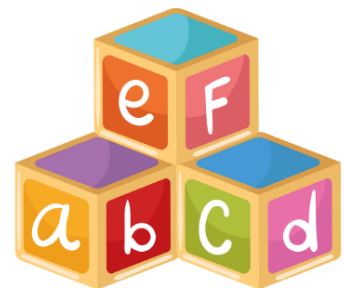
24th March 2026

Year 1 and 2 will have active maths in the morning. Can children arrive to school in their PE Kit and can they please bring water bottles with them. Thank you.



Reception Workshop

Reception parents are invited to a workshop session in the afternoon beginning 1PM and ending at 3PM.




CELEBRATE WITH US

EID AL-FITR



Main Dish
Vegetable Samosa
or
Vegetable Spring Roll

Side
Naan Bread
Wedges

Dessert
Ice cream



Eid al-Fitr



FOODSMART
FOR BODY AND BRAIN

A healthy food meal is important for children and young people to keep healthy and improve their performance

 **AIP**
GROUP OF COMPANIES



Dates for your diary



Spring Term 2026

March

Tuesday 17th March– School readiness workshop & nursery stay and play.

Thursday 19th OR Friday 20th March– School closed for Eid

Tuesday 24th March– Year 1 & 2 Active Maths Day

Tuesday 24th March– Reception Parents Workshop

Wednesday 25th March– Reception A Stars Walk

Thursday 26th March– Reception A Stars Walk

Friday 27th March– Year 1 Performance

Friday 27th March– Last day of term

Summer Term 2026

April

Monday 13th April– School reopens (start of new term)

Thursday 16th April– Reception Height and Weight Checks by school nurses

May

Monday 25th– Friday 29th May– Half term holiday (school closed)

June

Friday 19th June– Class Photos

