



Palfrey Infant School Newsletter

Spring Term 1 – 27.03.2026

A message from Mrs Walsh:

We have fabulous news for the community! The school will now be able to provide provision for 2 year old children with a newly refurbished Nursery! Spaces will be limited so please complete an application form as soon as possible. Please also complete an application form if you have a 3 year old child who you would like to attend our nursery from September as we will begin the transition phase after the Easter holidays.

We wish you all a lovely holiday! School will re-open on the 13th April at usual times.

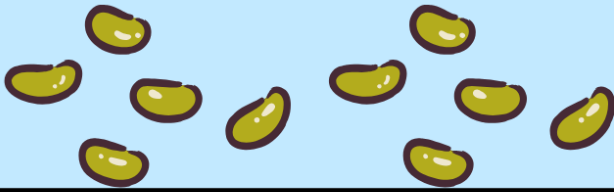


Headteacher



support@palfreyinfant.co.uk

JACK AND THE BEANSTALK



YEAR
1

Thank you to all the parents who attended Year 1's end of term performance.

Well done to Year 1 who worked very hard rehearsing and putting their performance together!





EID CLASS PARTIES

On Monday 23rd March the children had parties in class . They also had a special lunch on the day. Thank you to the kitchen staff for preparing the special lunch!



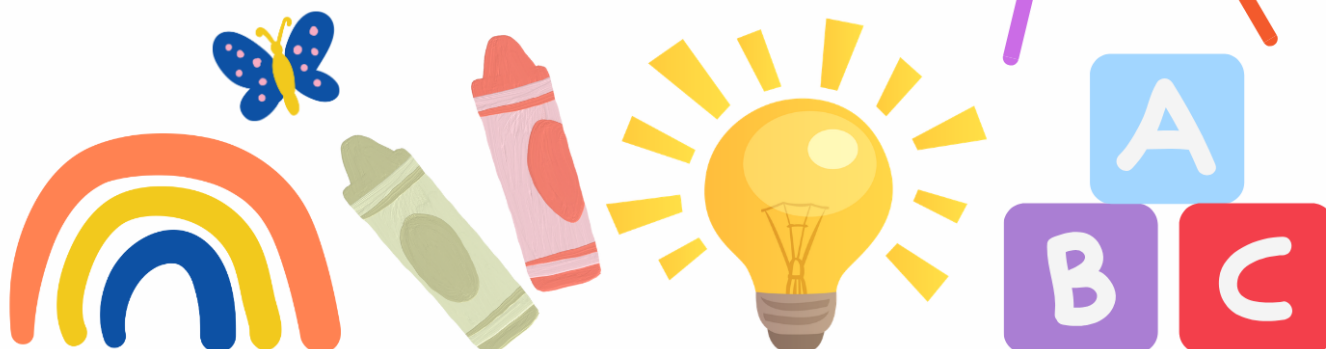


NURSERY

APPLICATIONS FOR SEPTEMBER 2026

If you wish to apply for a nursery place please apply on our website. Places are available for children from 2 years old.

1. Go to the Palfrey Infant school website
2. Select Key information →
→ admissions →
Nursery class admissions
3. Please complete an application form



PE DAYS

Monday: Class 9

Tuesday: Class 7

Wednesday: Reception

Thursday: Year 1 (Class 4 & 6)

Friday: Y2 class 8 & Y1 class 5



Please can pupils come to school in their PE Kits.

Free School Meals 2026



We would like all parents to sign up for the Free School Meals within school. Your child may be entitled to the pupil premium funding. This is a grant given by the government to schools in England to decrease the attainment gap for the most disadvantaged children, whether by income or by family upheaval.

Please access the link and complete the online form here:

<https://apply.cloudforedu.org.uk/ofsm/entrust>



COURSES

We are offering a range of courses for parents. The courses will be led by school nurses and hosted at school (please go to the main school office). All the courses will last approximately an hour. Please see the table for all available courses.

Course	Date	Start Time
School Readiness	16th June 2026	9am



A– Stars Walk

On Wednesday 25th and Thursday 26th March Reception took part in an organised walk.

The walk is designed to encourage pupils and parents to walk to school. Importantly, encouraging sustainable travel which reduces congestion on the roads and improving road safety.

Thank you to all those who attended!



Ash End Farm



Reception will be visiting Ash End Farm on the **17th and 18th June.**

Payment for the trip can be made via the School Gateway App



Free Advice & Support



Monday - Friday

9:30 am - 5:00 pm

- Financial & Housing Support
- Homelessness
- Safe Spaces
- Energy advice and support (WEAP)
- Multilingual assistance: Romanian, Slovakian, Polish, Russian, Ukrainian, Latvian Lithuanian, Bulgarian, Urdu, Panjabi, Gujarati



 nash_domcic  Nash Dom CIC

Contact us to book an appointment

info@nashdomcic.org
01922616444



Nash Dom
Community Hub,
Sun St, Walsall
WS1 4AL



SCHOOL TIMES from 2025-2026

Nursery School Times

Kingfishers, Robins and Owls	Start Time	End time
Owls	8:30am	11:30am
Penguins	12:30pm	3:30pm

Reception School Times

Classes 1, 2 & 3

	Start time	C2 & 3 End time	C1 End time
Monday-Friday	8:45am	3:15pm Main Gate	3:15pm Nursery gate

Year 1 School Times

Classes 4, 5 & 6	Start time	End time
Monday-Friday	8:45am	3:15pm

Year 2 School Times

Classes 7, 8 & 9	Start time	End time
Monday-Friday	8:45am	3:15pm

Please be mindful we have a 10 minute period for safe entry to school, there is no need to push and overcrowd the gate, this causes children to be frightened and is unnecessary. After the initial rush there is plenty of time to enter calmly. Once children have gone through the gate, please clear the gateway for other children to enter, do not linger.

If you wish to get a message to the class teacher please speak with the school adults who are on the gate: Mrs Walsh, Mrs Hennefer and Miss Glover.

Whitehall Road entrance will be closed at **8:55am**. Try not to be late as this creates issues.

Any late pupils need to enter via the Sun Street entrance (opposite the Nash Dom Centre).



Dates for your diary



Spring Term 2026

March

Friday 27th March– Year 1 Performance

Friday 27th March– Last day of term

Summer Term 2026

April

Monday 13th April– School reopens (start of new term)

Thursday 16th April– Reception Height and Weight Checks by school nurses

May

Monday 4th– Bank Holiday

Tuesday 5th– Street Teams in school to work with Year 1

Wednesday 6th– Street Teams in school to work with Reception

Thursday 7th- Street Teams in school to work with Year 2

Monday 25th– 29th– Half term holiday (school closed)

June

Tuesday 16th– School Readiness workshop

Wednesday 17th– Reception Trip to Ash End Farm

Thursday 18th– Reception Trip to Ash End Farm

Friday 19th June– Class Photos

