



# Palfrey Infant School Newsletter

Summer Term 1 – 08.05.2026

## A message from Mrs Walsh:

It's renowned Conservationist's Sir David Attenborough's 100th birthday today and, to mark the occasion, we will be having a poster-making competition in school! Children can design posters inspired by a 'looking after the planet' theme at home and then bring the posters into



Headteacher

school. This is an opportunity for our pupils to express their creativity while thinking about the ways we can all help protect the environment.

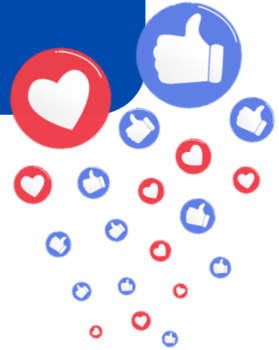
The posters can highlight positive actions such as recycling, saving energy, reducing waste, protecting wildlife, or any other ideas that inspire them to care for the Earth.



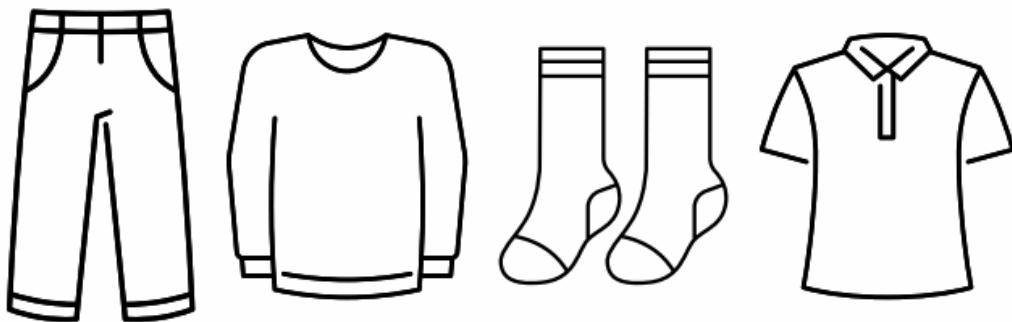
[support@palfreyinfant.co.uk](mailto:support@palfreyinfant.co.uk)



To keep updated  
about what is  
going on in school  
follow us on  
facebook!



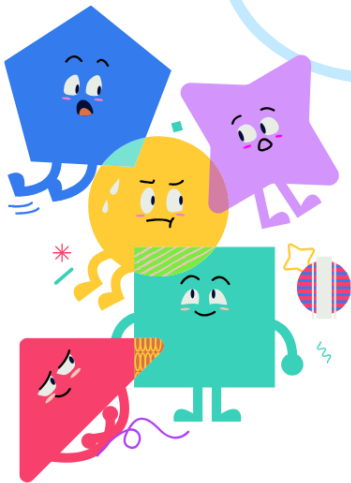
# CLOTHES DONATIONS



We welcome any donations of spare clothes such as joggers, trousers, leggings, tops, jumpers and socks.  
Please bring any donations to the school office.



# Parents Reflections Workshop



Wednesday 13<sup>th</sup> May

9AM



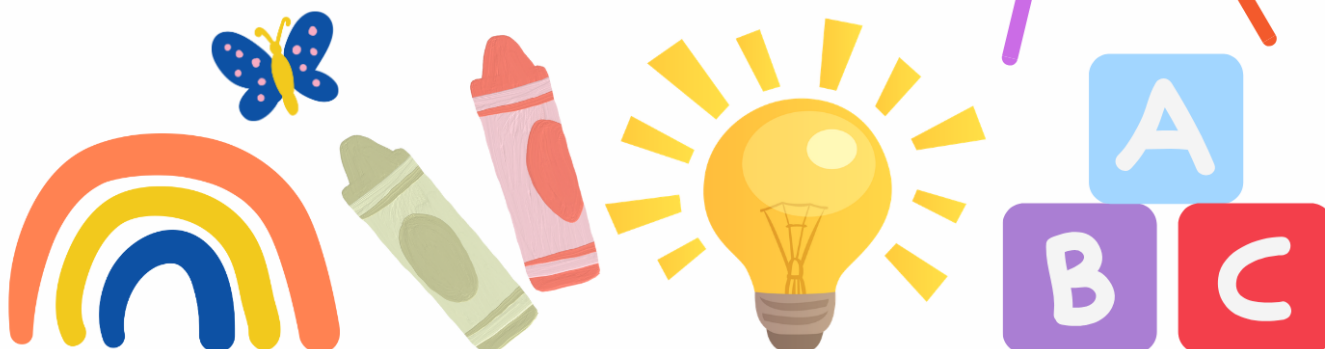


# NURSERY

## APPLICATIONS FOR SEPTEMBER 2026

If you wish to apply for a nursery place please apply on our website. Places are available for children from 2 years old.

1. Go to the Palfrey Infant school website
2. Select Key information →  
→ admissions →  
Nursery class admissions
3. Please complete an application form



# PE DAYS

**Monday:** Class 9

**Tuesday:** Class 7

**Wednesday:** Reception

**Thursday:** Year 1 (Class 4 & 6)

**Friday:** Y2 class 8 & Y1 class 5



Please can pupils come to school in their PE Kits.

## Free School Meals 2026



We would like all parents to sign up for the Free School Meals within school. Your child may be entitled to the pupil premium funding. This is a grant given by the government to schools in England to decrease the attainment gap for the most disadvantaged children, whether by income or by family upheaval.

Please access the link and complete the online form here:

<https://apply.cloudforedu.org.uk/ofsm/entrust>



# COURSES

We are offering a range of courses for parents. The courses will be led by school nurses and hosted at school (please go to the main school office). All the courses will last approximately an hour. Please see the table for all available courses.

Course	Date	Start Time
School Readiness	16th June 2026	9.10am



# Ash End Farm

On the **17<sup>th</sup> and 18<sup>th</sup> June**, Reception will be visiting Ash End Farm.

Payment can be made for the trip via the **School Gateway App**.



# HOLIDAYS IN TERM-TIME

Please note if you wish to take your child on holiday during the term time the school must be notified first **BEFORE** any holiday is booked as a holiday meeting with Miss Glover and Mrs Adams will need to be held first.

Holidays must be taken **OUTSIDE** of the School term to keep days missed in school at the minimum. 52 holidays have been taken so far this academic year. The Department of Education now publishes the school's attendance figures and due to holidays taken Palfrey Infants has ranked 84<sup>th</sup> out of 84 schools in Walsall.

**MISSED LEARNING IS MISSED  
OPPORTUNITY!**

# SCHOOL TIMES from 2025-2026

## Nursery School Times

Kingfishers, Robins and Owls	Start Time	End time
Owls	8:30am	11:30am
Penguins	12:30pm	3:30pm

## Reception School Times

### Classes 1, 2 & 3

	Start time	C2 & 3 End time	C1 End time
Monday-Friday	8:45am	3:15pm Main Gate	3:15pm Nursery gate

## Year 1 School Times

Classes 4, 5 & 6	Start time	End time
Monday-Friday	8:45am	3:15pm

## Year 2 School Times

Classes 7, 8 & 9	Start time	End time
Monday-Friday	8:45am	3:15pm

Please be mindful we have a 10 minute period for safe entry to school, there is no need to push and overcrowd the gate, this causes children to be frightened and is unnecessary. After the initial rush there is plenty of time to enter calmly. Once children have gone through the gate, please clear the gateway for other children to enter, do not linger.

If you wish to get a message to the class teacher please speak with the school adults who are on the gate: Mrs Walsh, Mrs Hennefer and Miss Glover.

Whitehall Road entrance will be closed at **8:55am**. Try not to be late as this creates issues.

Any late pupils need to enter via the Sun Street entrance (opposite the Nash Dom Centre).



# Dates for your diary



## Summer Term 2026

### May

**Wednesday 13th May**– Parent Reflexions Workshop

**Wednesday 20th**– Parent Briefing for new Reception pupils

**Wednesday 20th**– Play and Stay sessions for Nursery

**Monday 25th– 29th**– Half term holiday (school closed)

### June

**Monday 1st**– School re– opens

**Monday 1st**– Book fair in school

**Tuesday 16th**– School Readiness workshop

**Wednesday 17th**– Reception Trip to Ash End Farm

**Thursday 18th**– Reception Trip to Ash End Farm

**Friday 19th** – Class Photos

**Tuesday 23rd**– Blossom Group trip to Forge Mill Farm

**Tuesday 30th**– Nursery Move up day

**Tuesday 30th**– Afternoon Nursery closed

