



Palfrey Infant School Newsletter

Summer Term 2- 05.06.2026

A message from Mrs Walsh:

Thank you to all parents who attended the book fair this week!

Next week the phonics screening tests will take place, it is of great importance that children attend school every day next week. Children can also continue practising their phonics at home through the QR Codes they have been given.



Headteacher

Hello
June

support@palfreyinfant.co.uk

SPORTS DAY 15TH JULY



"YOU ARE SPECIAL" ASSEMBLY



On Thursday 16th July Year 2 will have their leavers assembly. All parents are invited to attend. Please can parents arrive at the Sun Street Entrance at 9.15AM.

Book Fair



During this week we held a book fair in school. There were a variety of books to choose from!



Thank you to all who attended and we hope everyone enjoys reading their new books!



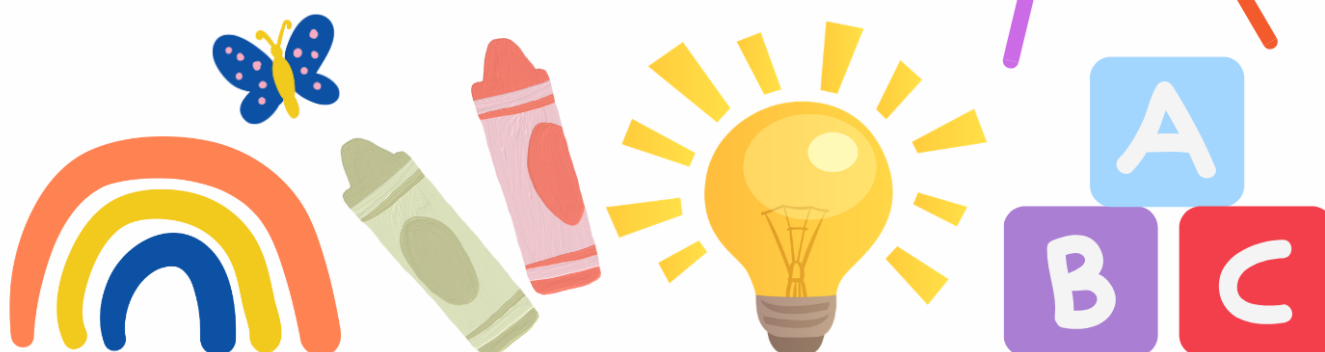


NURSERY

APPLICATIONS FOR SEPTEMBER 2026

If you wish to apply for a nursery place please apply on our website. Places are available for children from 2 years old.

1. Go to the Palfrey Infant school website
2. Select Key information →
→ admissions →
Nursery class admissions
3. Please complete an application form



PE DAYS

Monday: Class 9

Tuesday: Class 7

Wednesday: Reception

Thursday: Year 1 (Class 4 & 6)

Friday: Y2 class 8 & Y1 class 5



Please can pupils come to school in their PE Kits.

Free School Meals 2026



We would like all parents to sign up for the Free School Meals within school. Your child may be entitled to the pupil premium funding. This is a grant given by the government to schools in England to decrease the attainment gap for the most disadvantaged children, whether by income or by family upheaval.

Please access the link and complete the online form here:

<https://apply.cloudforedu.org.uk/ofsm/entrust>





Black Country Healthcare
NHS Foundation Trust

Let's Talk Presents

Walk & Talk

The Let's Walk & Talk group are inviting you to join their weekly session at **Walsall Arboretum**, every Thursday between 1:30pm and 2:30pm to get out, join us, enjoy the outdoors and connect with others!

If you would like to be involved, get in touch!



07909 213184/07423 687464



bchft.letstalk@nhs.net



COURSES

We are offering a range of courses for parents. The courses will be led by school nurses and hosted at school (please go to the main school office). All the courses will last approximately an hour. Please see the table for all available courses.

Course	Date	Start Time
School Readiness	16th June 2026	9.10am



Ash End Farm

On the **17th and 18th June**, Reception will be visiting Ash End Farm.

Payment can be made for the trip via the **School Gateway App**.



HOLIDAYS IN TERM-TIME

Please note if you wish to take your child on holiday during the term time the school must be notified first **BEFORE** any holiday is booked as a holiday meeting with Miss Glover and Mrs Adams will need to be held first.

Holidays must be taken **OUTSIDE** of the School term to keep days missed in school at the minimum. 52 holidays have been taken so far this academic year. The Department of Education now publishes the school's attendance figures and due to holidays taken Palfrey Infants has ranked 84th out of 84 schools in Walsall.

MISSED LEARNING IS MISSED OPPORTUNITY!

SCHOOL TIMES from 2025-2026

Nursery School Times

Kingfishers, Robins and Owls	Start Time	End time
Owls	8:30am	11:30am
Penguins	12:30pm	3:30pm

Reception School Times

Classes 1, 2 & 3

	Start time	C2 & 3 End time	C1 End time
Monday-Friday	8:45am	3:15pm Main Gate	3:15pm Nursery gate

Year 1 School Times

Classes 4, 5 & 6	Start time	End time
Monday-Friday	8:45am	3:15pm

Year 2 School Times

Classes 7, 8 & 9	Start time	End time
Monday-Friday	8:45am	3:15pm

Please be mindful we have a 10 minute period for safe entry to school, there is no need to push and overcrowd the gate, this causes children to be frightened and is unnecessary. After the initial rush there is plenty of time to enter calmly. Once children have gone through the gate, please clear the gateway for other children to enter, do not linger.

If you wish to get a message to the class teacher please speak with the school adults who are on the gate: Mrs Walsh, Mrs Hennefer and Miss Glover.

Whitehall Road entrance will be closed at **8:55am**. Try not to be late as this creates issues.

Any late pupils need to enter via the Sun Street entrance (opposite the Nash Dom Centre).



Dates for your diary



Summer Term 2026

June

Monday 1st– Friday 5th– Book fair

Tuesday 16th– School Readiness workshop

Wednesday 17th– Reception Trip to Ash End Farm

Thursday 18th– Reception Trip to Ash End Farm

Friday 19th – Class Photos

Tuesday 23rd– Blossom Group trip to Forge Mill Farm

Tuesday 30th– Nursery Move up day

Tuesday 30th– Afternoon Nursery closed

July

Wednesday 15th– Sports Day

Thursday 16th– Year 2 leavers assembly

Friday 17th– Break up for Summer holidays

