



Palfrey Infant School Newsletter

Summer Term 2- 19.06.2026

A message from Mrs Walsh:

We have had a lot of activities taking place in school this week, including the walk to school, School Readiness Workshop with the school nurses who were supporting parents, as well as Reception's trip to Ash End Farm. The Blossom Group will be going on their trip to Forge Mill Farm next week and we look forward to taking them!

The Year 2 transition to the Junior School has begun to take place and on the 30th June all pupils will visit the Juniors to meet their new teachers.

A big Well Done to our Year 1 pupils who took their phonics screening last week, results will be announced in due course.



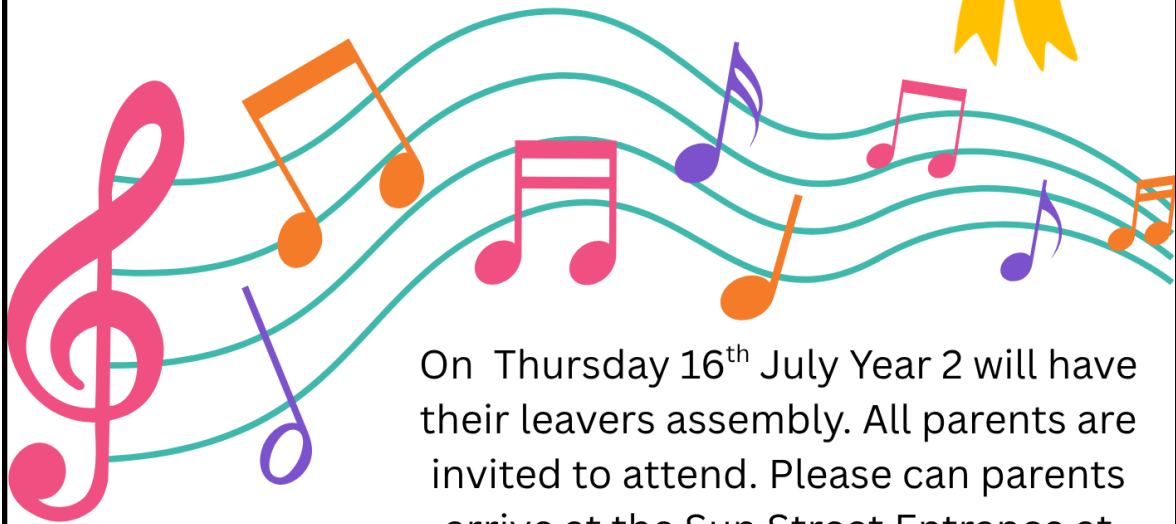
Headteacher

SPORTS DAY
15TH JULY



support@palfreyinfant.co.uk

"YOU ARE SPECIAL" ASSEMBLY



On Thursday 16th July Year 2 will have their leavers assembly. All parents are invited to attend. Please can parents arrive at the Sun Street Entrance at 9.15AM.

Walk To School Event

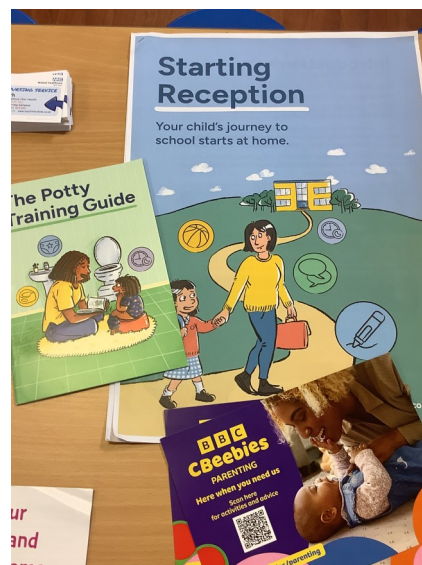
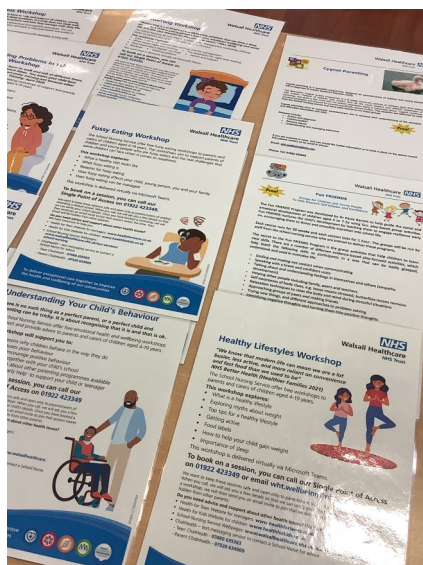
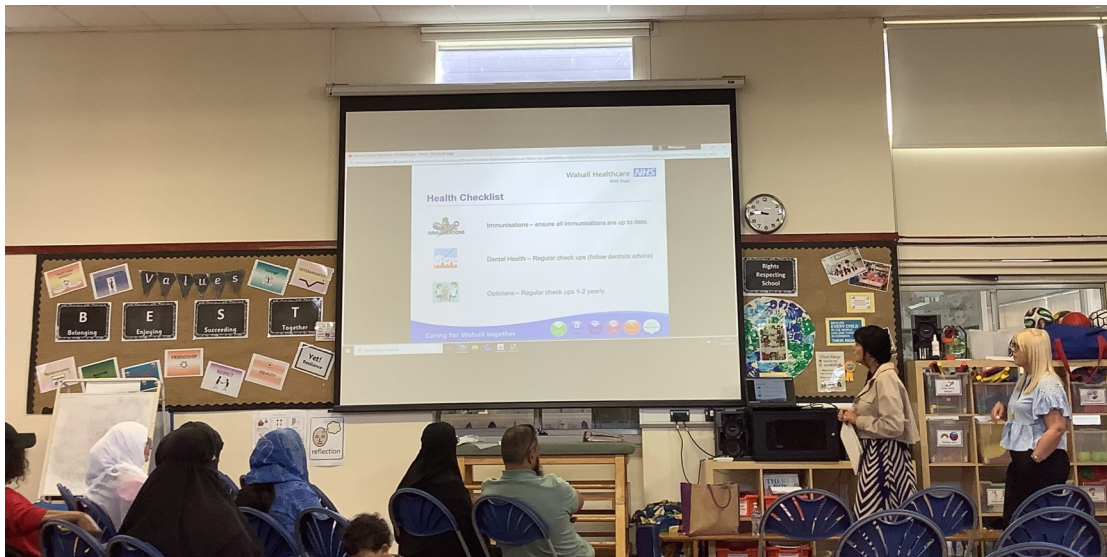
On Tuesday 16th June Palfrey Infant school took part in an organised walk. The walk is designed to encourage pupils and parents to walk to school. Importantly, encouraging sustainable travel which reduces congestion on the roads and improving road safety.

Thank you to all those who attended!



School Readiness Workshop

On Tuesday 16th June we held a school readiness workshop for parents with the school health nurses. We hope you found the session informative. Thank you to all parents who attended!





Ash End Farm

On 16th and 17th June reception visited Ash End farm. The classes were guided round the farm where they saw lots of different animals such as pigs, sheep, horses, cows and even a snake! Everyone enjoyed learning about the animals and even had the opportunity to feed some of the animals. Each child was given an egg to take home.





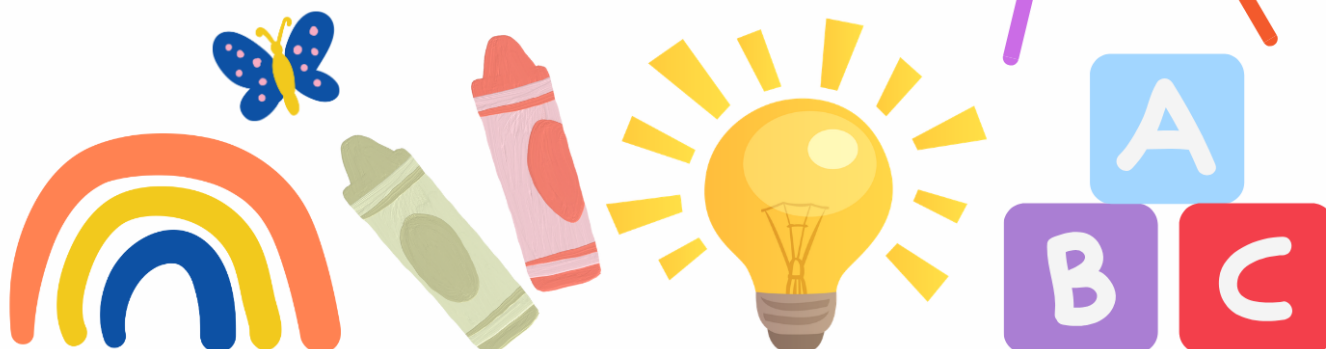


NURSERY

APPLICATIONS FOR SEPTEMBER 2026

If you wish to apply for a nursery place please apply on our website. Places are available for children from 2 years old.

1. Go to the Palfrey Infant school website
2. Select Key information →
→ admissions →
Nursery class admissions
3. Please complete an application form



FUNDING ELIGIBILITY



Some 2 year olds meet the eligibility criteria for Time 2 Start are entitled to 15 hours of funded early years provision from the term following the child's 2nd birthday.

ELIGIBILITY CRITERIA

- Income related Employment and Support Allowance
- Universal Credit- If you and your partner have a combined income from work less than £15,400 a year after tax.
- Families receiving support under the Immigration and Asylum Act and have a NASS number
- Parent's immigration status includes the condition of "No Recourse to Public Funds" and their household income is less than £26,500 with 1 child or £30,600 with 2 or more children

HOW TO APPLY:

Call Walsall FIS: 01922 653383 or Sharon Walker: 07876 818762

For more information visit: <https://go.walsall.gov.uk/children-and-young-people/information-childcare-providers-walsall/childcare-places-and-funding>



Reflexions - Who are we?

Holiday groups (HAF & Short Breaks)

Is your child on a waiting list to be seen by a paediatric health service?

Come and join us at Rushall Primary School for the meeting of the Supported Waiting Network.

We have guest speakers to advise on a variety of monthly topics and many services who support with access to additional support for you and your child. Come and chat to other parents, find out what additional support is available across the partnership with our monthly themed support group.

For further advice or information, telephone **01922 656463** or email pals.officer@nhs.net



🕒 9.30am-11.30am 📅 24 June 2026

📍 Rushall Primary School,
Pelsall Lane, WS4 1NG

ACTIVE UNIFORM

From September 2026 we will be moving towards an active uniform. There will be no separate PE Kit. The uniform will include:

- Navy Blue Sweatshirt (With or without school logo)
- Red Polo Shirt
- Navy or Black Joggers/ Leggings
- Black Velcro Trainers

All children can also bring a waterbottle with them



Please write your child's name on all of their belongings!



OPEN DAY

**SATURDAY
20 JUNE**



10AM - 2PM



Your place to
grow

Your place to

shine

Pre-register for an Open Day now!
www.walsallcollege.ac.uk/planmyvisit



☎ 01922 657000 | 🌐 www.walsallcollege.ac.uk



PE DAYS

Monday: Class 9

Tuesday: Class 7

Wednesday: Reception

Thursday: Year 1 (Class 4 & 6)

Friday: Y2 class 8 & Y1 class 5



Please can pupils come to school in their PE Kits.

Free School Meals 2026



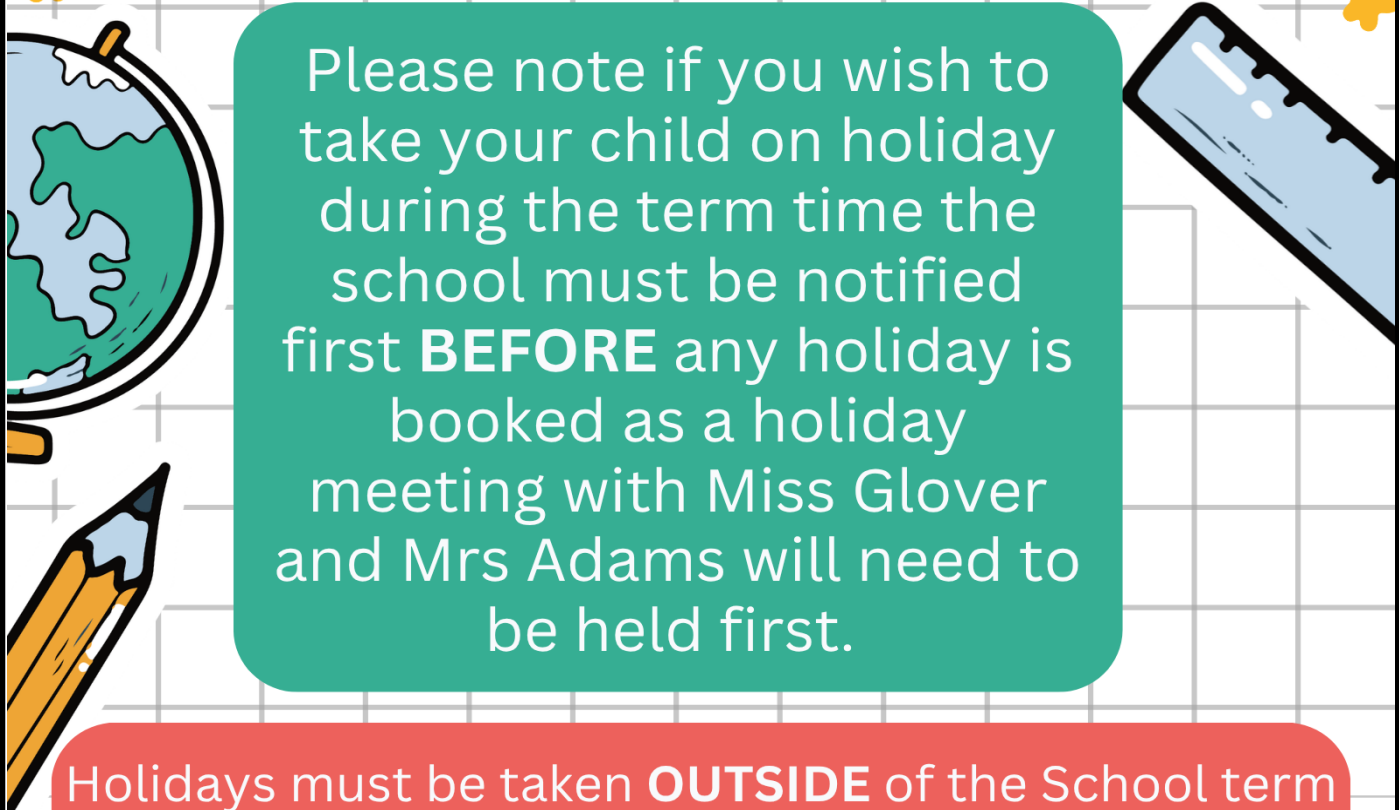
We would like all parents to sign up for the Free School Meals within school. Your child may be entitled to the pupil premium funding. This is a grant given by the government to schools in England to decrease the attainment gap for the most disadvantaged children, whether by income or by family upheaval.

Please access the link and complete the online form here:

<https://apply.cloudforedu.org.uk/ofsm/entrust>




HOLIDAYS IN TERM-TIME



Please note if you wish to take your child on holiday during the term time the school must be notified first **BEFORE** any holiday is booked as a holiday meeting with Miss Glover and Mrs Adams will need to be held first.

Holidays must be taken **OUTSIDE** of the School term to keep days missed in school at the minimum. 52 holidays have been taken so far this academic year. The Department of Education now publishes the school's attendance figures and due to holidays taken Palfrey Infants has ranked 84th out of 84 schools in Walsall.

MISSED LEARNING IS MISSED OPPORTUNITY!



SCHOOL TIMES from 2025-2026

Nursery School Times

Kingfishers, Robins and Owls	Start Time	End time
Penguins	12:30pm	3:30pm

Reception School Times

Classes 1, 2 & 3

	Start time	C2 & 3 End time	C1 End time
Monday-Friday	8:45am	3:15pm Main Gate	3:15pm Nursery gate

Year 1 School Times

Classes 4, 5 & 6	Start time	End time
Monday-Friday	8:45am	3:15pm

Year 2 School Times

Classes 7, 8 & 9	Start time	End time
Monday-Friday	8:45am	3:15pm

Please be mindful we have a 10 minute period for safe entry to school, there is no need to push and overcrowd the gate, this causes children to be frightened and is unnecessary. After the initial rush there is plenty of time to enter calmly. Once children have gone through the gate, please clear the gateway for other children to enter, do not linger.

If you wish to get a message to the class teacher please speak with the school adults who are on the gate: Mrs Walsh, Mrs Hennefer and Miss Glover.

Whitehall Road entrance will be closed at **8:55am**. Try not to be late as this creates issues.

Any late pupils need to enter via the Sun Street entrance (opposite the Nash Dom Centre).



Dates for your diary



Summer Term 2026

June

Tuesday 23rd– Blossom Group trip to Forge Mill Farm

Wednesday 24th– Transition Day

Tuesday 30th– Transition Day

Tuesday 30th– Afternoon Nursery closed

July

Wednesday 15th– Sports Day

Thursday 16th– Year 2 leavers assembly

Friday 17th– Break up for Summer holidays

