



Palfrey Infant School Newsletter

Summer Term 2- 03.07.2026

A message from Mrs Walsh:

All children enjoyed the opportunity to meet their new teachers as part of their transition. We have a busy 2 weeks ahead with different events taking place throughout the school such as the Nursery Graduation, Sports Day, as well as the Year 2 leavers assembly.

Please be aware that school will re-open on the 2nd September 2026 so please ensure you have returned from your holidays by the 2nd September to ensure the strongest start to the new school year.

Please also note that from the new school year we will be moving towards an "active uniform". This includes joggers, red polo shirt, navy blue sweatshirt and black Velcro trainers.



Headteacher

Last Day Of School



17th July



SCHOOL CLOSSES AT 1PM

There will be a special beach themed lunch

support@palfreyinfant.co.uk

Nursery Graduation Picnic!

Parents are invited to attend the nursery graduation picnic on Friday 10th July 2026. It will be from 10AM- 11AM for the morning session and 2-3PM for the afternoon session. Parents are welcome to bring a picnic blanket if they wish to do so. Refreshments will be provided for the children, please do not bring any food.



SPORTS DAY

15TH JULY

YEAR 1&2-MORNING SESSION

RECEPTION- AFTERNOON

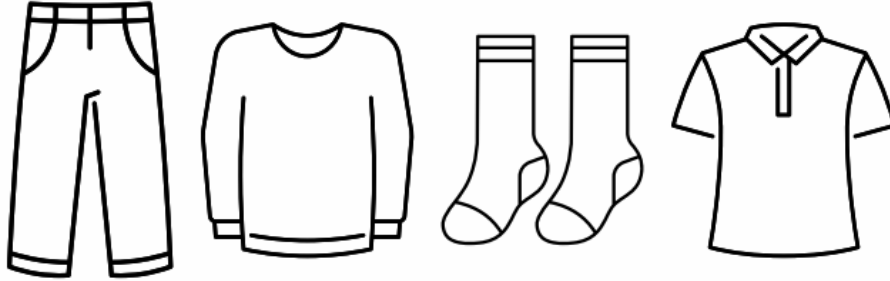
SESSION

Please ensure PE Kits are worn and bring a water bottle

Unfortunately due to space restrictions parents are unable to attend



CLOTHES DONATIONS



We welcome any donations of spare clothes such as joggers, trousers, leggings, tops, jumpers and socks. Please bring any donations to the school office.



Tackling tough moments, support with behaviours

Is your child on a waiting list to be seen by a paediatric health service?

Come and join us at Manor Farm Community Association for the meeting of the Supported Waiting Network.

We have guest speakers to advise on a variety of monthly topics and many services who support with access to additional support for you and your child. Come and chat to other parents, find out what additional support is available across the partnership with our monthly themed support group.

For further advice or information, telephone **01922 656463** or email pals.officer@nhs.net

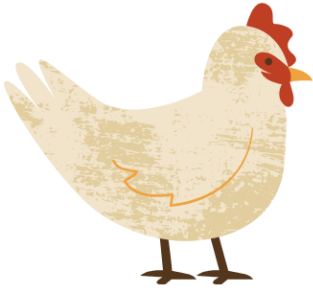


🕒 9.30am-11.30am 📅 29 July 2026

📍 Manor Farm Community Association
King George Cres, Rushall, Walsall, WS4 1EU

WHC_17097314_10.06.26_V_2





FORGE MILL FARM

On the 23rd June the Blossom Group visited Forge Mill Farm.

They saw loads of different animals including cows, pigs, sheep and goats! They enjoyed their day out and had a lot of fun



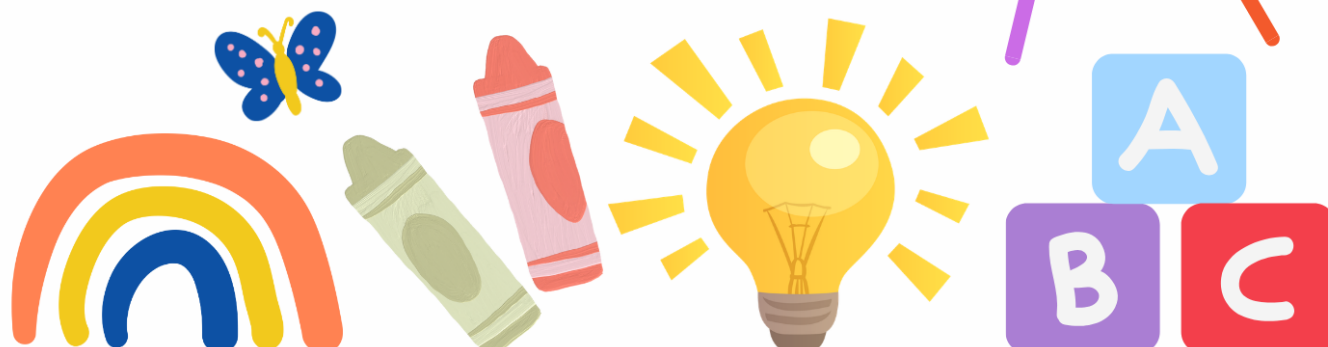


NURSERY

APPLICATIONS FOR SEPTEMBER 2026

If you wish to apply for a nursery place please apply on our website. Places are available for children from 2 years old.

1. Go to the Palfrey Infant school website
2. Select Key information →
→ admissions →
Nursery class admissions
3. Please complete an application form



FUNDING ELIGIBILITY



Some 2 year olds meet the eligibility criteria for Time 2 Start are entitled to 15 hours of funded early years provision from the term following the child's 2nd birthday.

ELIGIBILITY CRITERIA

- Income related Employment and Support Allowance
- Universal Credit- If you and your partner have a combined income from work less than £15,400 a year after tax.
- Families receiving support under the Immigration and Asylum Act and have a NASS number
- Parent's immigration status includes the condition of "No Recourse to Public Funds" and their household income is less than £26,500 with 1 child or £30,600 with 2 or more children

HOW TO APPLY:

Call Walsall FIS: 01922 653383 or Sharon Walker: 07876 818762

For more information visit: <https://go.walsall.gov.uk/children-and-young-people/information-childcare-providers-walsall/childcare-places-and-funding>



PE DAYS

Monday: Class 9

Tuesday: Class 7

Wednesday: Reception

Thursday: Year 1 (Class 4 & 6)

Friday: Y2 class 8 & Y1 class 5



Please can pupils come to school in their PE Kits.

Free School Meals 2026



We would like all parents to sign up for the Free School Meals within school. Your child may be entitled to the pupil premium funding. This is a grant given by the government to schools in England to decrease the attainment gap for the most disadvantaged children, whether by income or by family upheaval.

Please access the link and complete the online form here:

<https://apply.cloudforedu.org.uk/ofsm/entrust>



ACTIVE UNIFORM

From September 2026 we will be moving towards an active uniform. There will be no separate PE Kit. The uniform will include:

- Navy Blue Sweatshirt (With or without school logo)
- Red Polo Shirt
- Navy or Black Joggers/ Leggings
- Black Velcro Trainers

All children can also bring a waterbottle with them



Please write your child's name on all of their belongings!

SCHOOL TIMES from 2025-2026

Nursery School Times

Kingfishers, Robins and Owls	Start Time	End time
Penguins	12:30pm	3:30pm

Reception School Times

Classes 1, 2 & 3

	Start time	C2 & 3 End time	C1 End time
Monday-Friday	8:45am	3:15pm Main Gate	3:15pm Nursery gate

Year 1 School Times

Classes 4, 5 & 6	Start time	End time
Monday-Friday	8:45am	3:15pm

Year 2 School Times

Classes 7, 8 & 9	Start time	End time
Monday-Friday	8:45am	3:15pm

Please be mindful we have a 10 minute period for safe entry to school, there is no need to push and overcrowd the gate, this causes children to be frightened and is unnecessary. After the initial rush there is plenty of time to enter calmly. Once children have gone through the gate, please clear the gateway for other children to enter, do not linger.

If you wish to get a message to the class teacher please speak with the school adults who are on the gate: Mrs Walsh, Mrs Hennefer and Miss Glover.

Whitehall Road entrance will be closed at **8:55am**. Try not to be late as this creates issues.

Any late pupils need to enter via the Sun Street entrance (opposite the Nash Dom Centre).



END OF YEAR ASSEMBLY

YEAR
2



Parents are invited to attend the Year 2 leavers assembly. We look forward to seeing you all there!

THURSDAY 16TH JULY- 9.15AM





SPECIAL LUNCH 17TH JULY 2026



Main Dish

SANDWICHES

Sides

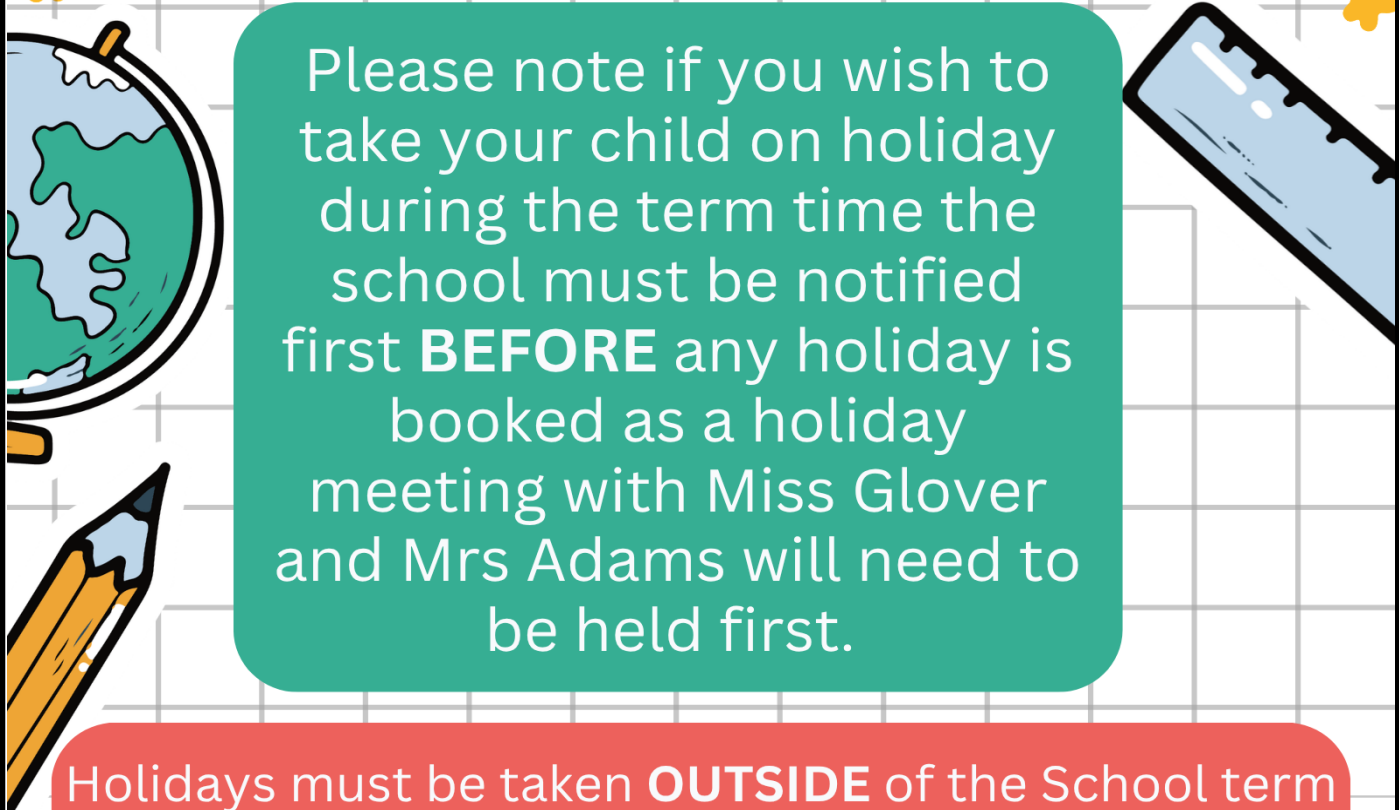
NACHOS
&
SALAD

Desserts

ICE CREAM




HOLIDAYS IN TERM-TIME



Please note if you wish to take your child on holiday during the term time the school must be notified first **BEFORE** any holiday is booked as a holiday meeting with Miss Glover and Mrs Adams will need to be held first.

Holidays must be taken **OUTSIDE** of the School term to keep days missed in school at the minimum. 52 holidays have been taken so far this academic year. The Department of Education now publishes the school's attendance figures and due to holidays taken Palfrey Infants has ranked 84th out of 84 schools in Walsall.

MISSED LEARNING IS MISSED OPPORTUNITY!



Dates for your diary



Summer Term 2026

July

Friday 10th– Nursery Graduation Picnic– 10-11AM

Friday 10th– Nursery Graduation Picnic– 2-3PM

Wednesday 15th– Sports Day

Thursday 16th– Year 2 leavers assembly– 9.15AM

Thursday 16th– Nursery Closes

Friday 17th– Special beach themed lunch

Friday 17th– Break up for Summer holidays– 1PM

